

# EMPLOYMENT AND HR SERVICES TO MEET YOUR NEEDS

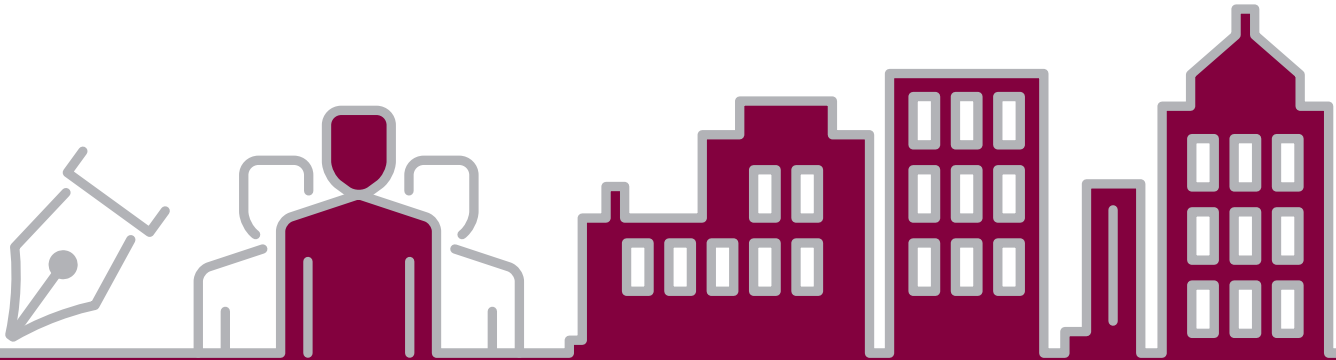
*Moving forward together*



**HR and employment law issues can create extra pressures that may distract you from building and growing your business. Quite often a business will want to try to deal with its employment issues in-house and will only revert to legal advice as a last resort, by which time it can often be too late.**

At Palmers Solicitors, we offer all the expert employment law and HR services your business might require, either to support your in-house team or on an outsourced basis, and whenever you might require it.

We therefore offer a cost-effective solution, from a choice of four tailored service options, depending on the needs of your business. These tailored service options will provide you with peace of mind that whatever the employment law or HR issue may be – from a simple query to a potentially serious dispute – you have fast, easy access to specialist advice and support from a qualified solicitor.



## TAILORED SERVICE OPTIONS

	Bronze	Silver	Gold	Platinum
Hours of telephone and/or email advice per year	12	24	24	36
Annual review/update of staff handbook and employment contract*	✓	✓	✓	✓
Template advanced contract of employment	✗	✓	✓	✓
Suite of template disciplinary letters	✗	✗	✓	✓
x2 sessions per year of either/or onsite advice meeting or training	✗	✗	✓	✓

If you find that your business requires an increase to the number of hours of telephone and/or email advice you receive each year, this can be boosted by fixed cost hourly add ons.

*\*We will provide our own standard template staff handbook and basic contract of employment if nothing is in place at the outset.*

With Palmers Solicitors as part of your team, you can be sure that your employment law and HR issues are in safe hands, so that you can concentrate on moving your business forward.

For more information about how our dedicated team can help you, please contact us.



### Samantha Randall

Associate Solicitor

Basildon

☎ 01268 240000

@ SamanthaRandall@palmerslaw.co.uk



### **BASILDON**

19 Town Square,  
Basildon,  
Essex, SS14 1BD

☎ 01268 240000

### **RAYLEIGH**

105 High Street,  
Rayleigh,  
Essex, SS6 7QA

☎ 01268 988488

### **SOUTH WOODHAM FERRERS**

Prospect House, Brickfields Road,  
South Woodham Ferrers,  
Chelmsford, Essex, CM3 5XB

☎ 01245 322111

### **THURROCK**

Ascension Chambers,  
Fleming Road, Chafford Hundred,  
Grays, Essex, RM16 6HH

☎ 01375 484444

### **COMMERCIAL HUB**

Suite 1A, Phoenix House,  
Christopher Martin Road,  
Basildon, Essex, SS14 3EZ

☎ 01268 240000

[www.palmerslaw.co.uk](http://www.palmerslaw.co.uk) [enquiries@palmerslaw.co.uk](mailto:enquiries@palmerslaw.co.uk)

